

SWEDISH EMERGENCY DISASTER EQUIPMENT

# Voice Amplifier



## The Total Solution

FOR NUCLEAR, BIOLOGICAL & CHEMICAL EMERGENCIES



**Normeca**<sup>AS</sup>

SUPPLIER OF MOBILE HOSPITALS

Mailandvn 12, P.O. Box 404, 1470 Lorenskog - Norway  
Tlf.: +47 67 92 76 00 - Fax: +47 67 92 76 92  
Mail: [post@normeca.no](mailto:post@normeca.no) - Web: [www.normeca.no](http://www.normeca.no)

## Com-kit



### **Two-way communication kit.**

In the Decontamination environment it is a problem to hear and understand the casualties when wearing the Hood. It is also a problem for the casualties to here the person in the Hood.

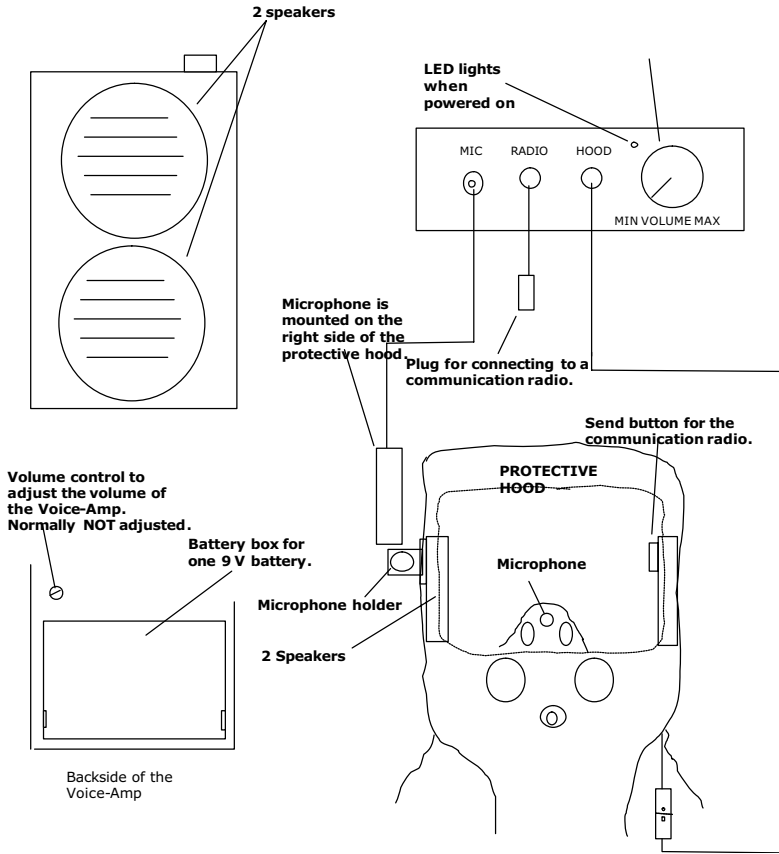
The Com-Kit with the Voice Amplifier solve this problem. With the integrated microphone in the mask and the Voice Amplifier the casualties can here you even if there is a lot of background noise.

The microphone fitted to the Hoods right –side and the two loudspeakers in the Hood guarantee the most conceivable sound. Transmission button integrated in the left loudspeaker.

The Com-Kit is adaptable to ALL radios on the market.



# Voice Amplifier



## Connecting the Voice-Amplifier

---

- Connect the Voice-Amp to the 6-cord plug on the hood.
- Mount the microphone on the mic-holder on the right side of the hood.
- Activate the Voice-Amp by turning the Volume control clockwise until the red LED is lit.
- Turn the Volume control slowly towards Max to achieve a suitable sound level in the speakers of the protective suit.
- If there is acoustic feedback, decrease the volume.
- Attention: The Volume control only regulates the speakers in the hood.
- The Voice-Amp has a fixed sound level.
- The Voice-Amp is put into the left breast-pocket of the protective suit.
- Attention: The Voice-Amp is NOT water-proof. Check that the breast-pocket's flap is firmly shut.
- If needed, the Voice-Amp can be connected to a communication radio with the cable labeled 'Radio'.
- Set the volume on the communication radio so a suitable volume is achieved in the hood speakers.
- Transmission is done by pressing the red Send button on the left speaker on the hood. One way is to press your hand on the left side of the hood until the button is activated
- Transmission runs as long as the button is pushed in.